

Kuesa Studio installation instructions



tQCS Limited
82F, International Commerce Centre, 1,
Austin Road West Kowloon, Hong Kong

tQCS Inc.
30th flr. Trade Tower, 511, Yeongdong-
daero, Gangnam-gu, Seoul 06164, South
Korea

Klarälvdalens
Datakonsult AB
Box 30
SE-683 21 Hagfors
Sweden

KDAB (Deutschland)
GmbH
Reuchlinstraße 10-11
10553 Berlin
Germany

KDAB (USA), LLC
2929 Allen Parkway
Suite 200
Houston, Texas 77019
USA

KDAB S.A.S
54 rue Frédéric Mistral
1er étage
84270 Vedène
France

KDAB Ltd
Newton Street
The Ropewalks
Macclesfield, SK11 6QJ
United Kingdom

Table of contents

1 Requirements	4
2 Online Installation	5
3 Offline Installation	9



Versions

Version	Date	Comments
1.0		Initial version

1 Requirements

Prior to installing Kuesa Studio, the following should have been installed:

- Blender 2.8 or more recent.



2 Offline Installation

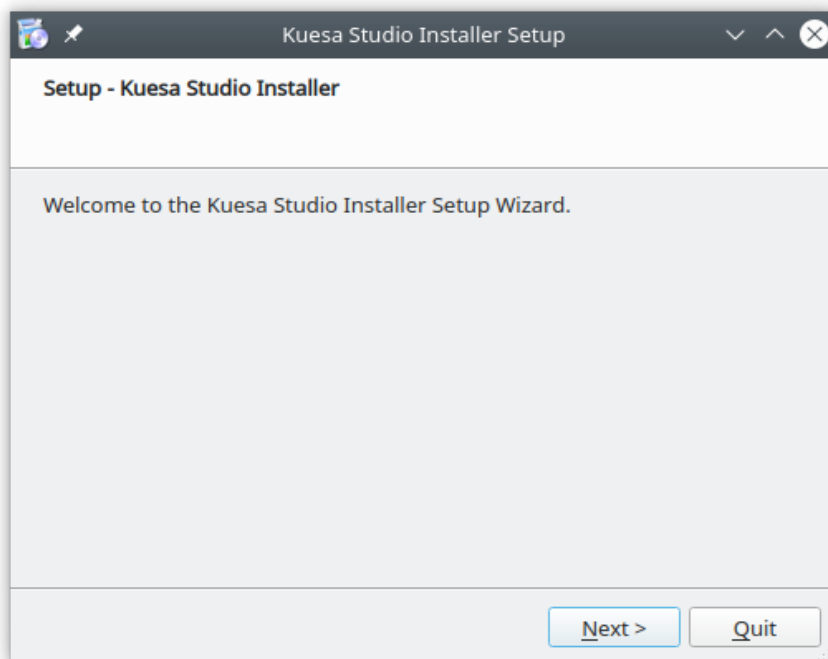
Offline installers can be downloaded from: <https://downloads.kdab.com/kuesa/studio/offline>

Once downloaded, run the installer.

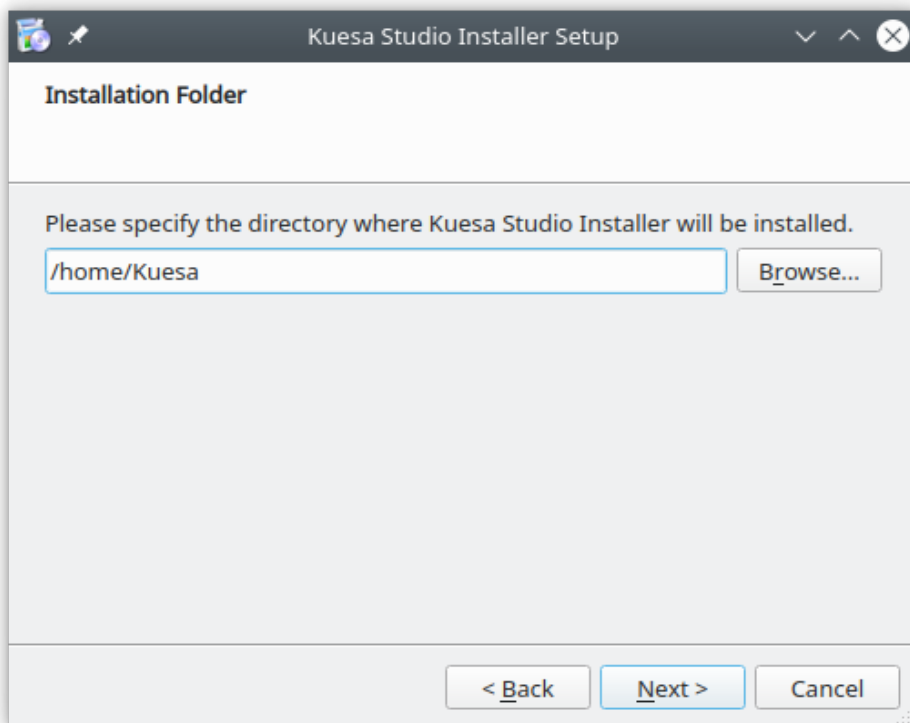
Note: on linux, you might have to make the installer executable by running the command:

```
chmod +x ./KuesaStudio_Offline_linux_x86_64.run
```

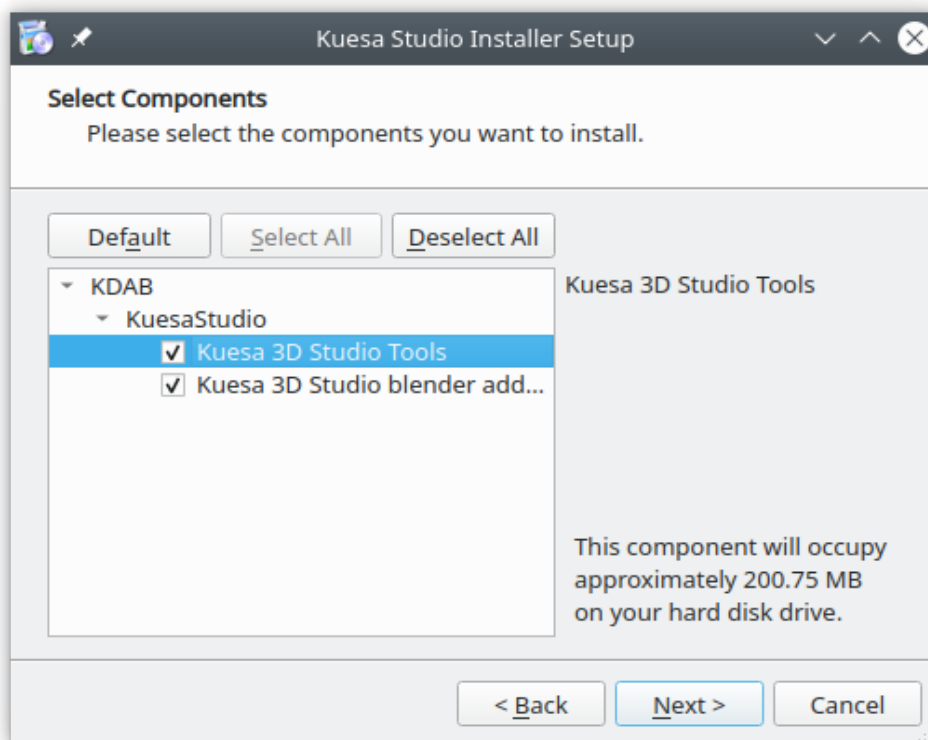
2.1.1



1. Select the path where the KuesaStudio Tools should be installed

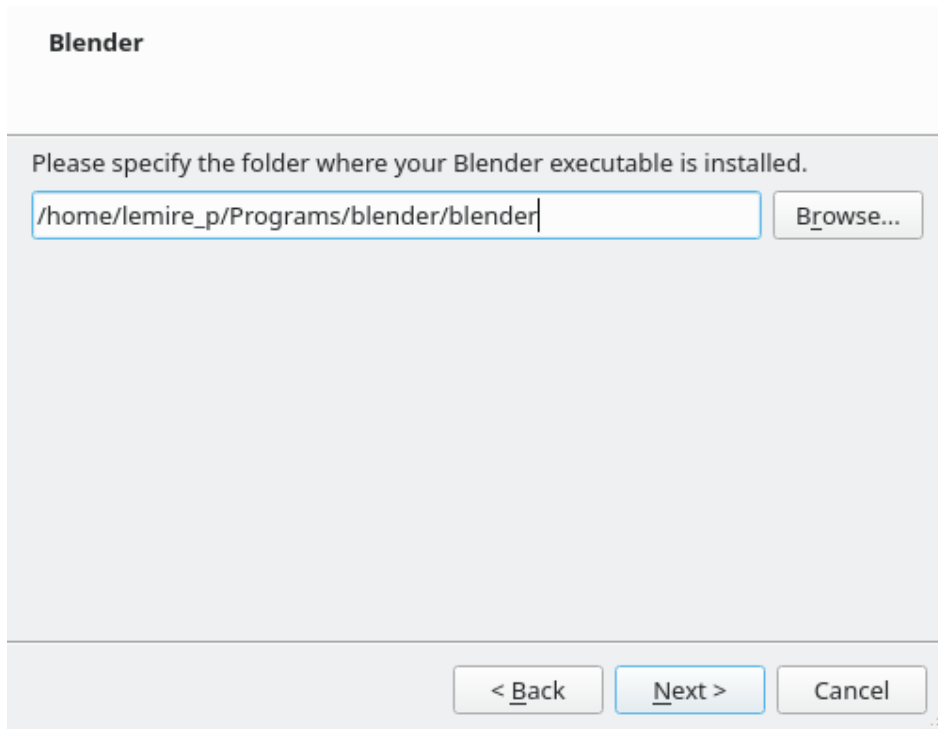


2. Then select both entries under KuesaStudio



3. When prompted, select the location where the Blender executable is located





- 4. Installation should then be completed

