

Kuesa Studio 설치 안내자료



tQCS Limited
82F, International Commerce Centre, 1,
Austin Road West Kowloon, Hong Kong

tQCS Inc.
30th flr, Trade Tower, 511, Yeongdong-
daero, Gangnam-gu, Seoul 06164, South
Korea

Klarälvdalens
Datakonsult AB
Box 30
SE-683 21 Hagfors
Sweden

KDAB (Deutschland)
GmbH
Reuchlinstraße 10-11
10553 Berlin
Germany

KDAB (USA), LLC
2929 Allen Parkway
Suite 200
Houston, Texas 77019
USA

KDAB S.A.S
54 rue Frédéric Mistral
1er étage
84270 Vedène
France

KDAB Ltd
Newton Street
The Ropewalks
Macclesfield, SK11 6QJ
United Kingdom

Table of contents 목차

1 Requirements 준비사항.....	4
2 Online Installation 온라인 설치.....	5
3 Offline Installation 오프라인 설치.....	9



Versions 버전

Version	Date	Comments
1.0		Initial version

1 Requirements 준비사항

Prior to installing Kuesa Studio, the following should have been installed:

Kuesa Studio 설치 전, 아래 사항이 설치되어야 합니다:

- Blender 2.8 or more recent.

Blender 2.8 이상



2 Offline Installation 오프라인 설치

Offline installers can be downloaded from:

오프라인 설치 프로그램은 아래에서 다운로드 가능합니다:

<https://downloads.kdab.com/kuesa/studio/offline>

Once downloaded, run the installer.

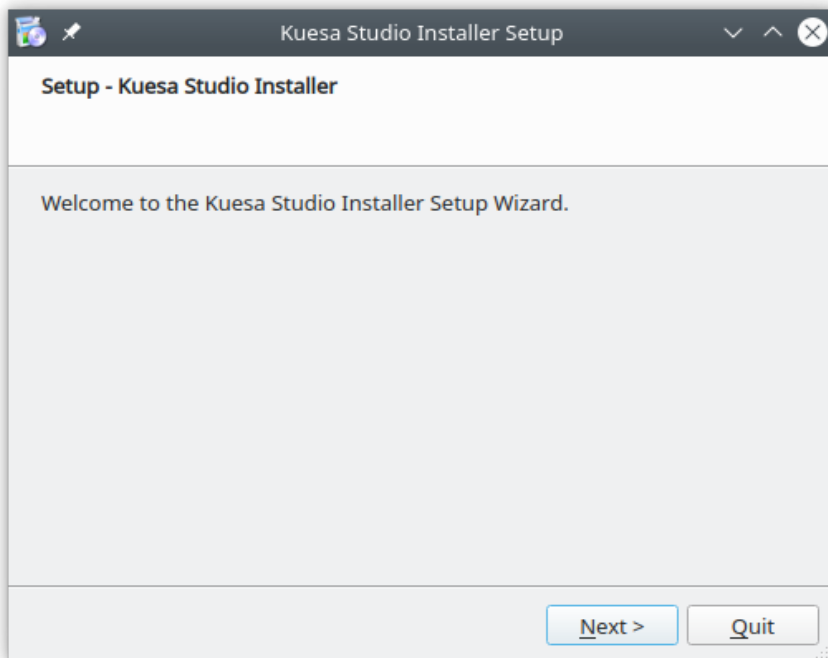
다운로드 후, 설치 프로그램을 실행하세요.

Note: on linux, you might have to make the installer executable by running the command:

알림: Linux에서는 명령어를 이용해 설치 프로그램을 실행시켜야 합니다.:

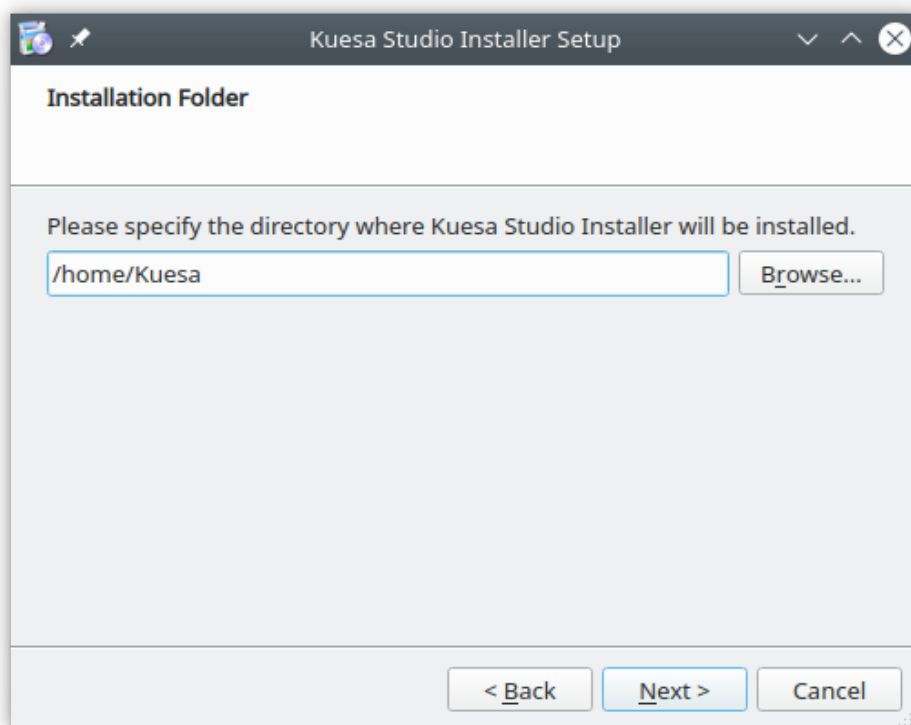
```
chmod +x ./KuesaStudio_Offline_linux_x86_64.run
```

2.1.1



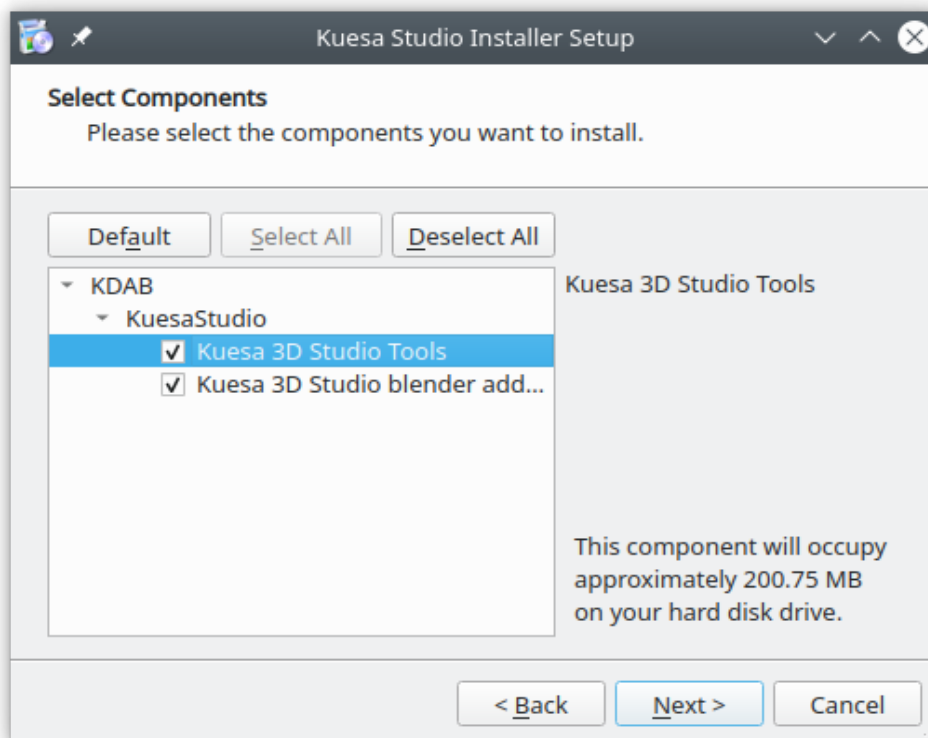
1. Select the path where the KuesaStudio Tools should be installed

Kuesa Studio Tools이 설치될 위치를 설정하세요.



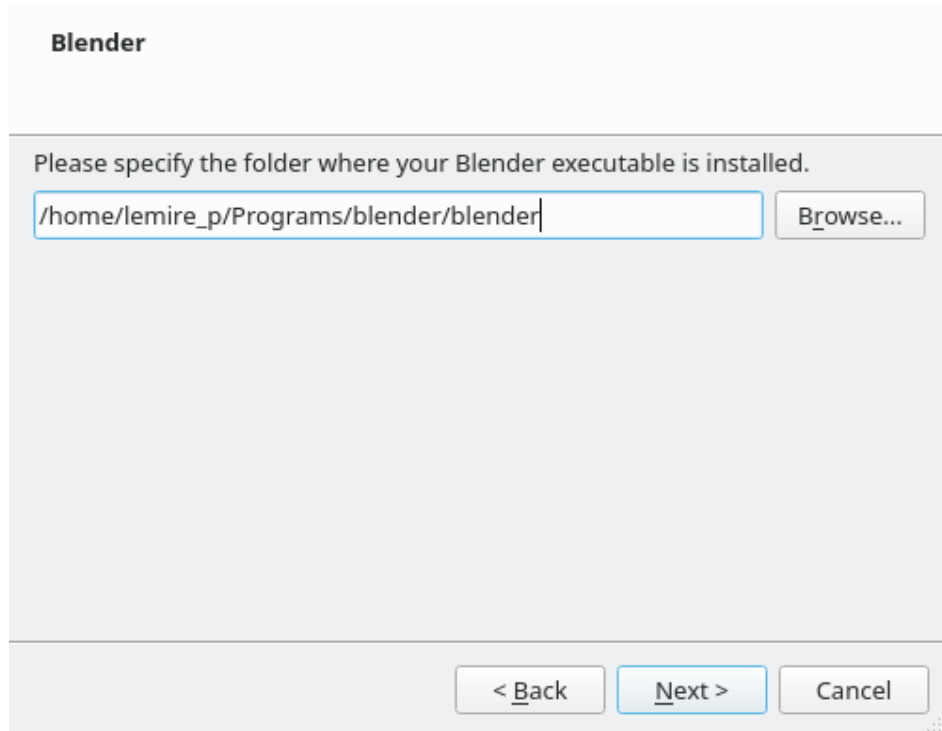
2. Then select both entries under KuesaStudio

Kuesa Studio내의 두 entry 모두 선택하세요



3. When prompted, select the location where the Blender executable is located

프롬프트되면, Blender executable의 위치를 선택하세요



4. Installation should then be completed

설치가 완료되었습니다

